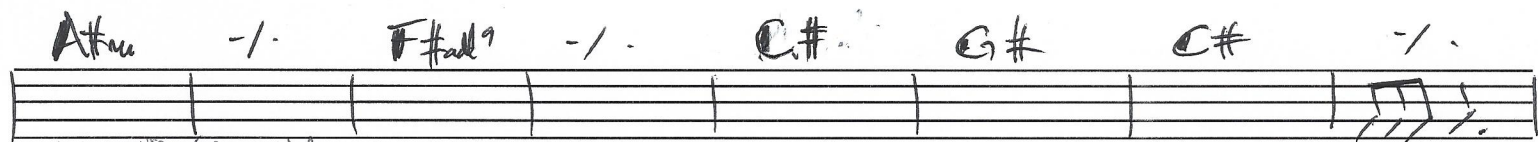
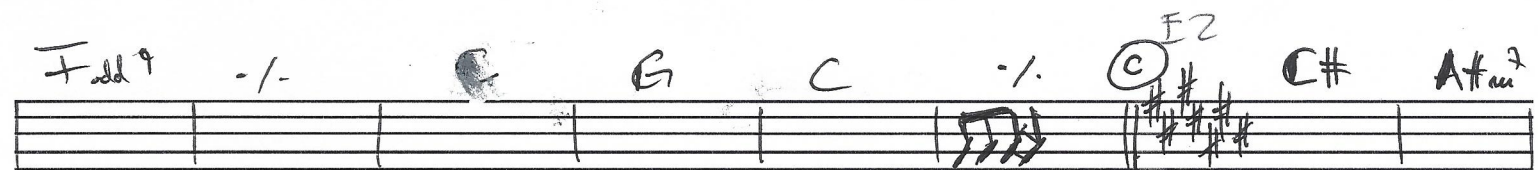
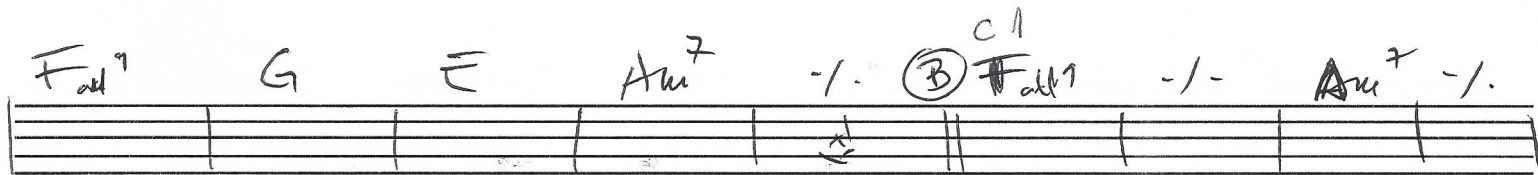
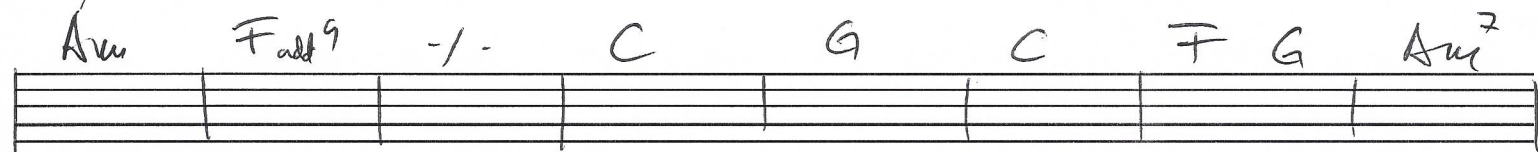
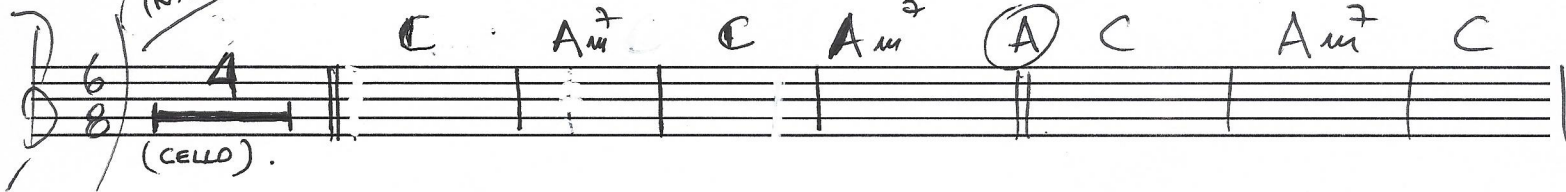
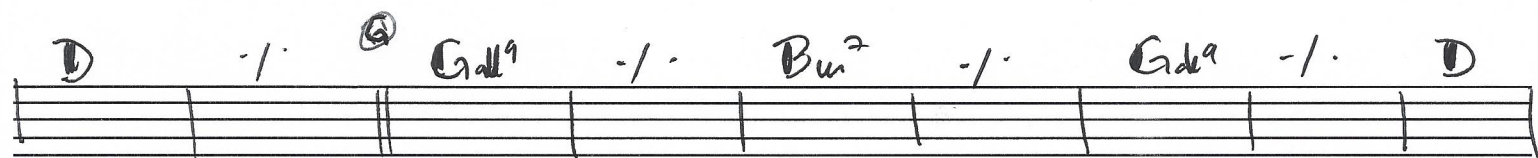
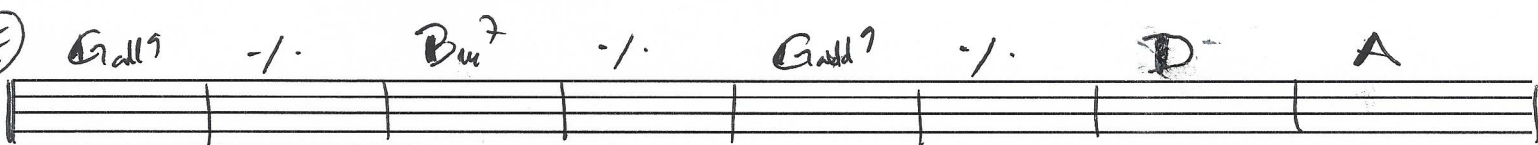
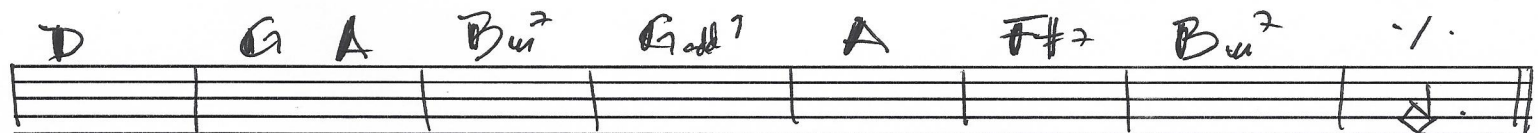
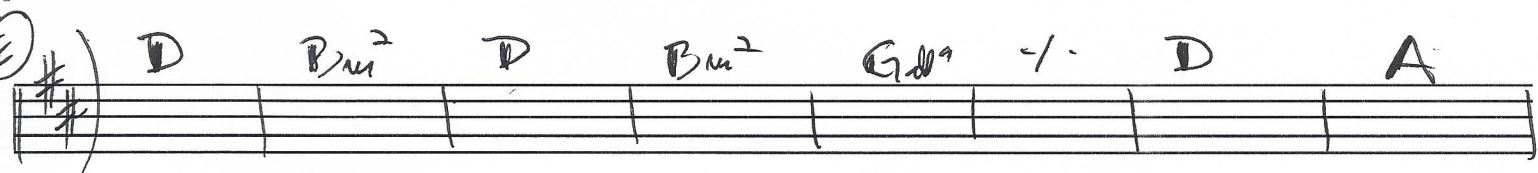


# ALEUYA COHEN.

INTRO



solitonium on 1/1



Handwritten musical notation on ten staves, featuring various chords and accidentals. The notation includes:

- Staff 1: F<sup>add 9</sup> -/., G, C, -/., C<sup>#</sup> (F<sup>2</sup>), C<sup>#</sup>, A<sup>7</sup><sub>aug</sub>.
- Staff 2: C<sup>#</sup>, A<sup>7</sup><sub>aug</sub>, F<sup>add 9</sup> -/., C<sup>#</sup>, G<sup>#</sup>, C<sup>#</sup>, F<sup>#</sup>, G<sup>#</sup>.
- Staff 3: A<sup>7</sup><sub>aug</sub>, F<sup>add 9</sup>, G<sup>#</sup>, E<sup>#</sup>, A<sup>7</sup> -/., D<sup>9</sup> F<sup>add 9</sup> -/.
- Staff 4: A<sup>7</sup><sub>aug</sub> -/., F<sup>add 9</sup> -/., C<sup>#</sup>, G<sup>#</sup>, C<sup>#</sup> -/., *solit. nuevo rum en 11*.
- Staff 5: (E<sup>#</sup>) D, B<sup>7</sup><sub>aug</sub>, D, B<sup>7</sup><sub>aug</sub>, G<sup>add 9</sup> -/., D, A.
- Staff 6: D, G, A, B<sup>7</sup><sub>aug</sub>, G<sup>add 9</sup>, A, F<sup>7</sup>, B<sup>7</sup><sub>aug</sub> -/.
- Staff 7: (F) G<sup>add 9</sup> -/., B<sup>7</sup><sub>aug</sub> -/., G<sup>add 9</sup> -/., D, A.
- Staff 8: D -/., G<sup>add 9</sup> -/., B<sup>7</sup><sub>aug</sub> -/., G<sup>add 9</sup> -/., D.
- Staff 9: A, B<sup>7</sup><sub>aug</sub> -/., G, -A, D<sup>add 9</sup> -/.

Fall-----  
 Felix Molina Concha  
 Musico profesional  
 (569) 96895607



Violin

# ALELUYA COHEN

Handwritten musical notation for the first staff of the violin part. It begins with a treble clef, a key signature of one sharp (F#), and a time signature of 6/8. The staff contains two measures of whole notes, each marked with a '4' above it. This is followed by a double bar line and a circled letter 'A'. After another double bar line, there is a measure of a whole note marked with a '10' above it, followed by three more measures of whole notes.

Handwritten musical notation for the second staff. It starts with a whole note, followed by a half note, and then a measure with a circled letter 'B' above it. The staff continues with several measures of half notes and quarter notes, some with slurs and ties.

Handwritten musical notation for the third staff. It begins with a whole note, followed by a half note, and then a measure with a circled letter 'C' above it. The staff continues with several measures of half notes and quarter notes, some with slurs and ties.

Handwritten musical notation for the fourth staff. It starts with a whole note, followed by a half note, and then a measure with a circled letter 'D' above it. The staff continues with several measures of half notes and quarter notes, some with slurs and ties.

Handwritten musical notation for the fifth staff. It begins with a whole note, followed by a half note, and then a measure with a circled letter 'E' above it. The staff continues with several measures of half notes and quarter notes, some with slurs and ties.

Handwritten musical notation for the sixth staff. It contains several measures of half notes and quarter notes, some with slurs and ties.

Handwritten musical notation for the seventh staff. It begins with a whole note, followed by a half note, and then a measure with a circled letter 'F' above it. The staff continues with several measures of half notes and quarter notes, some with slurs and ties.

Handwritten musical notation for the eighth staff. It starts with a whole note, followed by a half note, and then a measure with a circled letter 'G' above it. The staff continues with several measures of half notes and quarter notes, some with slurs and ties.

Handwritten musical notation for the ninth staff. It begins with a whole note, followed by a half note, and then a measure with a circled letter 'F' above it. The staff continues with several measures of half notes and quarter notes, some with slurs and ties.

Handwritten musical notation for the tenth staff. It contains several measures of half notes and quarter notes, some with slurs and ties.

Handwritten musical notation for the eleventh staff. It contains several measures of half notes and quarter notes, some with slurs and ties.

cello

# ALELUYA COHEN

Handwritten musical score for cello, titled "ALELUYA COHEN". The score is written on ten staves, organized into five systems of two staves each. The notation includes various musical symbols such as notes, rests, beams, and dynamic markings.

The score is divided into sections marked with circled letters A through G:

- Section A:** The first system, starting with a treble clef and a key signature of one sharp (F#). It contains two staves of music.
- Section B:** The second system, containing two staves of music.
- Section C:** The third system, containing two staves of music.
- Section D:** The fourth system, containing two staves of music.
- Section E:** The fifth system, containing two staves of music.
- Section F:** The sixth system, containing two staves of music.
- Section G:** The seventh system, containing two staves of music.

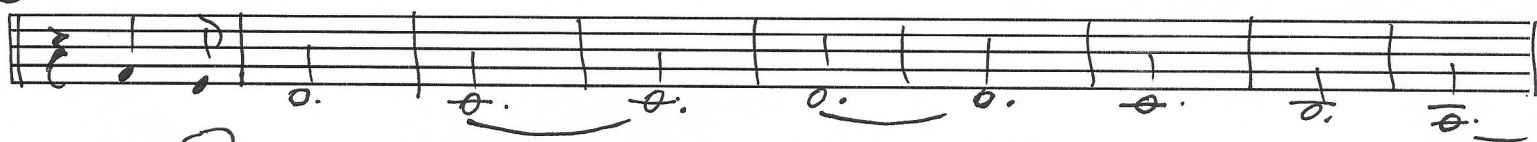
Dynamic markings are present in the lower systems:

- Pizzicato...** is written below the staff in the sixth system.
- Alco...** is written below the staff in the seventh system.





(B)



(C)



(D)



(E)



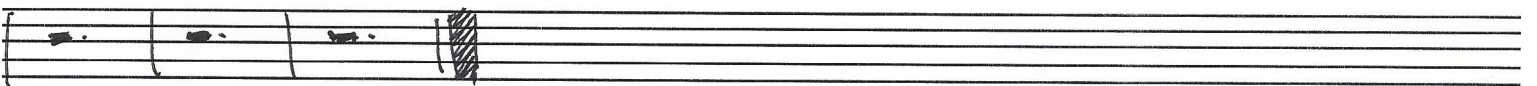
Pizzicato...

Alco...

(F)



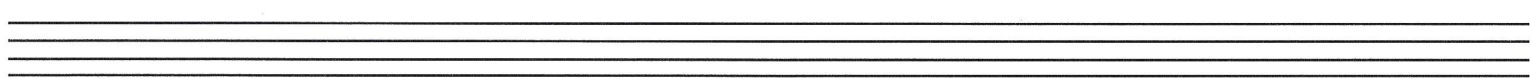
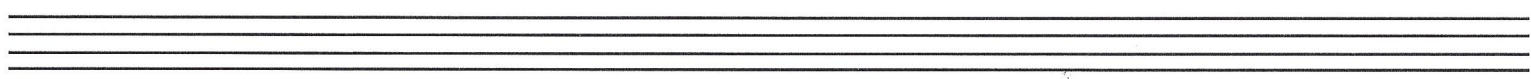
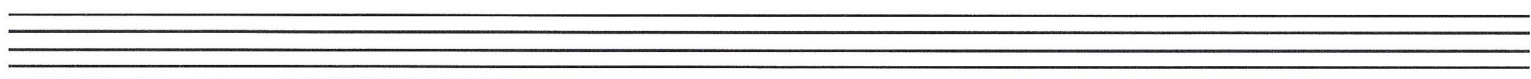
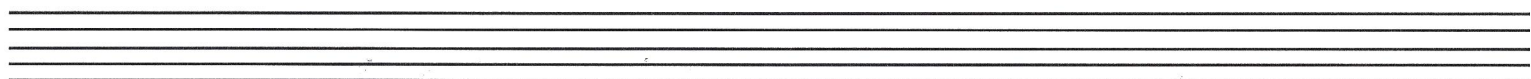
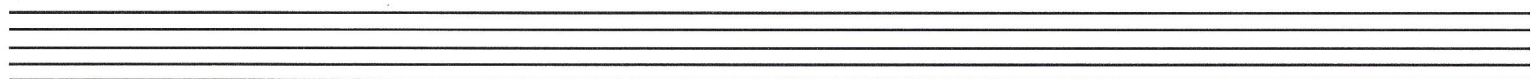
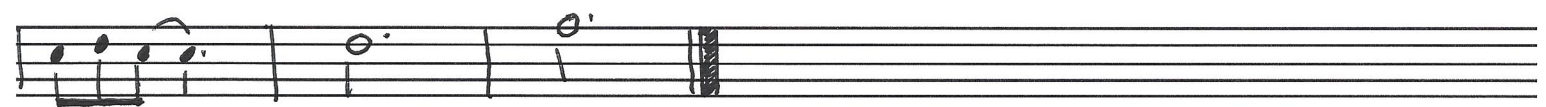
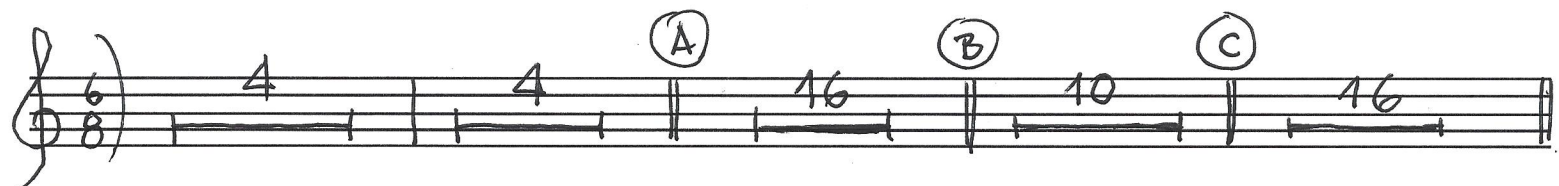
(G)



Felix Molina Concha  
Musico profesional  
(569) 96895607

CLARINETE

ALELUYA COHEN



FLAUTA:

# ALELUYA COTTEN

